



## RAB4A mouse mAb

<b>Catalog No</b>	YP-Ab-04471
<b>Isotype</b>	IgG
<b>Reactivity</b>	Human;Mouse;Rat;Monkey
<b>Applications</b>	WB
<b>Gene Name</b>	rab4a-n
<b>Protein Name</b>	
<b>Immunogen</b>	Purified recombinant human RAB4A protein fragments expressed in E.coli.
<b>Specificity</b>	This antibody detects endogenous levels of RAB4A and does not cross-react with related proteins.
<b>Formulation</b>	Liquid in PBS containing 50% glycerol, 0.5% BSA and 0.02% sodium azide.
<b>Source</b>	Monoclonal, Mouse
<b>Purification</b>	The antibody was affinity-purified from mouse ascites by affinity-chromatography using epitope-specific immunogen.
<b>Dilution</b>	wb 1:500
<b>Concentration</b>	1 mg/ml
<b>Purity</b>	≥90%
<b>Storage Stability</b>	-20°C/1 year
<b>Synonyms</b>	HRES 1 / RAB4;Oncogene RAB4;OTTHUMP00000042824;Rab 4;RAB 4A;RAB4 member RAS oncogene family;RAB4A;RAB4A member RAS oncogene family;RAB4A_HUMAN;Ras related protein Rab 4A;Ras related protein Rab4A;Ras-related protein Rab-4A.
<b>Observed Band</b>	24kD
<b>Cell Pathway</b>	Membrane; Peripheral membrane protein . Cytoplasm . Early endosome membrane ; Peripheral membrane protein . Recycling endosome membrane ; Peripheral membrane protein . Generally associated with membranes. Cytoplasmic when phosphorylated by CDK1. .
<b>Tissue Specificity</b>	Brain,Caudate nucleus,Cervix carcinoma,Human small intestine,Skin,U
<b>Function</b>	function:Protein transport. Probably involved in vesicular traffic.,PTM:Phosphorylated by CDC2 kinase during mitosis.,similarity:Belongs to the small GTPase superfamily. Rab family.,subcellular location:Generally associated with membranes. Cytoplasmic when phosphorylated by CDC2.,subunit:Interacts with RAB11FIP1, RABEP1, ZFYVE20 and RUFY1. Interacts with SGSM1, SGSM2 and SGSM3.,
<b>Background</b>	This gene is a member of the largest group in the Ras superfamily of small GTPases, which regulate membrane trafficking. The encoded protein is associated with early endosomes and is involved in their sorting and recycling.



The protein also plays a role in regulating the recycling of receptors from endosomes to the plasma membrane. Alternatively spliced transcript variants have been observed for this gene. [provided by RefSeq, Dec 2012],

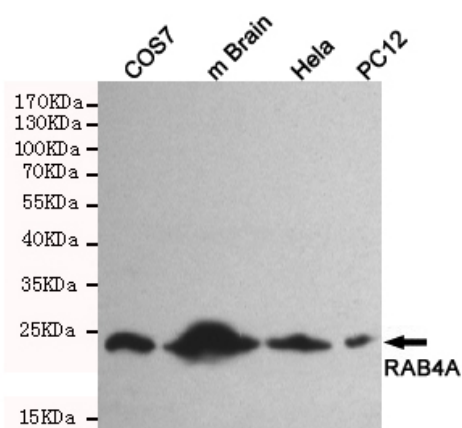
**matters needing attention**

Avoid repeated freezing and thawing!

**Usage suggestions**

This product can be used in immunological reaction related experiments. For more information, please consult technical personnel.

**Products Images**



Western blot detection of RAB4A in HeLa,PC-12,COS7 and mouse brain cell lysates using RAB4A mouse mAb (1:500 diluted).Predicted band size:24KDa.Observed band size:24KDa.